

# DARKROOM DEVIL SOLUTION FILES

\*One Puzzle Per Page

## Table of Contents



### Page

2. Sorting the Photos
3. Computer Unlock
4. Crime Scene One Unlock
5. Developing Film Puzzle
6. Crime Scene Two
7. Raven Puzzle
8. Crime Scene Three
9. Mr. Drake's Burgers & Shakes Maze
10. Zachary's Unlock
11. Suspect Elimination (How to eliminate each suspect)
12. Killer Envelope
13. Desk Unlock
14. Menu Puzzle/Phone Unlock



## [ SORTING PICTURES ]

Solution: The photos have the name of the two photo development locations on the back. There are four photos for each location. The first location is Simon's Classic Photos. The second location is Retro Photography.





# [ COMPUTER UNLOCK ]

Password: salmon





# [ CRIME SCENE 1 ]

Password: 15j

This location is the only location off of CR182 that has a boating area and pine trees.





## [ DEVELOPING FILM PUZZLE ]

Solution: "If only I had someone else to help me. I am all alone."

Use this information with the heights to eliminate some of the suspects.







## [ CRIME SCENE 2 ]

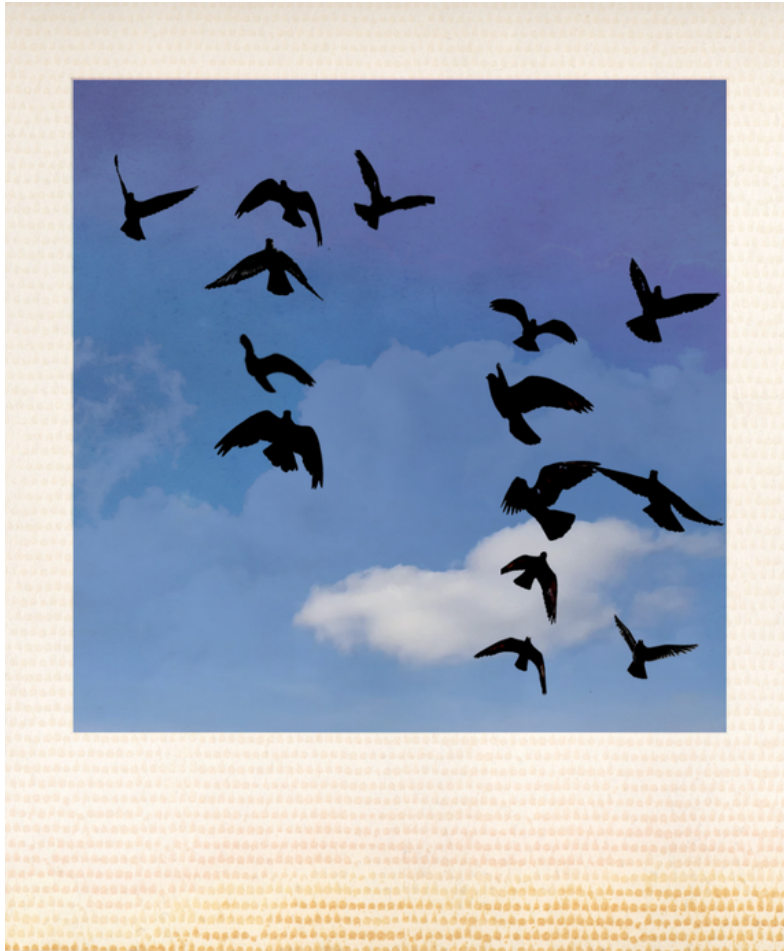
Password: 13s

Based on the time and locations in the photos, the killer is heading south on Main St.  
This is only storage business in that location.



# [ RAVEN PHOTOS ]

Solution: TE



# [ CRIME SCENE 3 ]

Password: 2v





# [ MR. DRAKES BURGERS & SHAKES MAZE ]

Password: 231




## MR. DRAKES BURGERS & shakes

### BURGERS FOR A YEAR CONTEST

The goal is to reach the restaurant with the golden key, but along the way, you will face the three Fast Foodies who want to prevent you from reaching the end. Each of them has a favorite Mr. Drake item. If you feed them the correct food, they will let you pass. But you can use each item of food once, so be careful! Turn in your answer with the correct **total** - (Add up all of the numbers for the square you pass through) for the path Mr. Drake takes at any participating restaurant, and you could win FREE burgers for a year!








 30	 29	 28	 27	 26	 25
 24	 23	 22	 21	 20	 19
 18	 17	 16	 15	 14	 13
 12	 11	 10	 9	 8	 7
 6	 5	 4	 3	 2	 START HERE

Use this to keep track of how many food items you pick up along the way, so you can use them later:

 :    
  :    
  :



# [ ZACHARY'S UNLOCK ]

Password: 231.



# [ SUSPECT ELIMINATIONS ]

There are 6 ways to eliminate suspects. You will have to use all six to be left with one suspect. Who, if you have done everything right, will be the killer.

## Crime Scene One

1. In the journal paper from the killer, the Darkroom Devil mentions that they are known for their photography. In the note section of the suspect list, two people, Tyler and Tucker, are noted as not being well-known for photography.
2. The puzzle using the paper from the website and the photo development sheet reveals the killer is doing this solo. This, with what officer Hamilton tells you, will let you eliminate anyone shorter than 5'8". Because the killer can slouch to make him/herself shorter he/she can make him/herself taller. So you know that the killer is at least 5'8"

## Crime Scene Two

1. In the journal paper from the killer, the Darkroom Devil mentions that it would be easier to lure people in if he were a woman. So this eliminates all of the females.
2. The polaroids of the birds give you the letters T and E. This will eliminate Chris and Danny.

## Crime Scene Three

1. In the journal paper from the killer, the Darkroom Devil mentions that the victims' workplaces form a triangle, and his workplace is inside the triangle. So this eliminates Robert, Dante, and Athena since their workplaces are outside the triangle.
2. Solving the burger puzzle for Zachary will get you the information for the killer's weight. In Zachary's unlock, he mentions that the killer weighs more than 170 lbs. So you can eliminate anyone who weighs less than 170 lbs.



# [ KILLER ENVELOPE ]

Password: stevengaines

Look at the suspect elimination page for details on how to eliminate suspects.





# [ DESK UNLOCK ]

Password: 2101





# [ MENU PUZZLE/PHONE UNLOCK ]

Password: a7b2c4

