



MYSTERIES UNDER THE BIG TOP - SOLUTIONS

Table of Contents

page

Case 1: Funny Business

2. 1st Clue - Crime Scene (pages 5-6)
3. 2nd Clue - The Juggler's Room (page 7)
4. 3rd Clue - Witness (page 8)
5. Where is the hat? (page 9)


Case 2: Clowns Chaos

6. 1st Clue Crime Scene (page 13)
7. 2nd Clue - Strange Note (page 13)
8. 3rd Clue - Witness (page 14)
9. What was mixed into the face paint? (page 15)

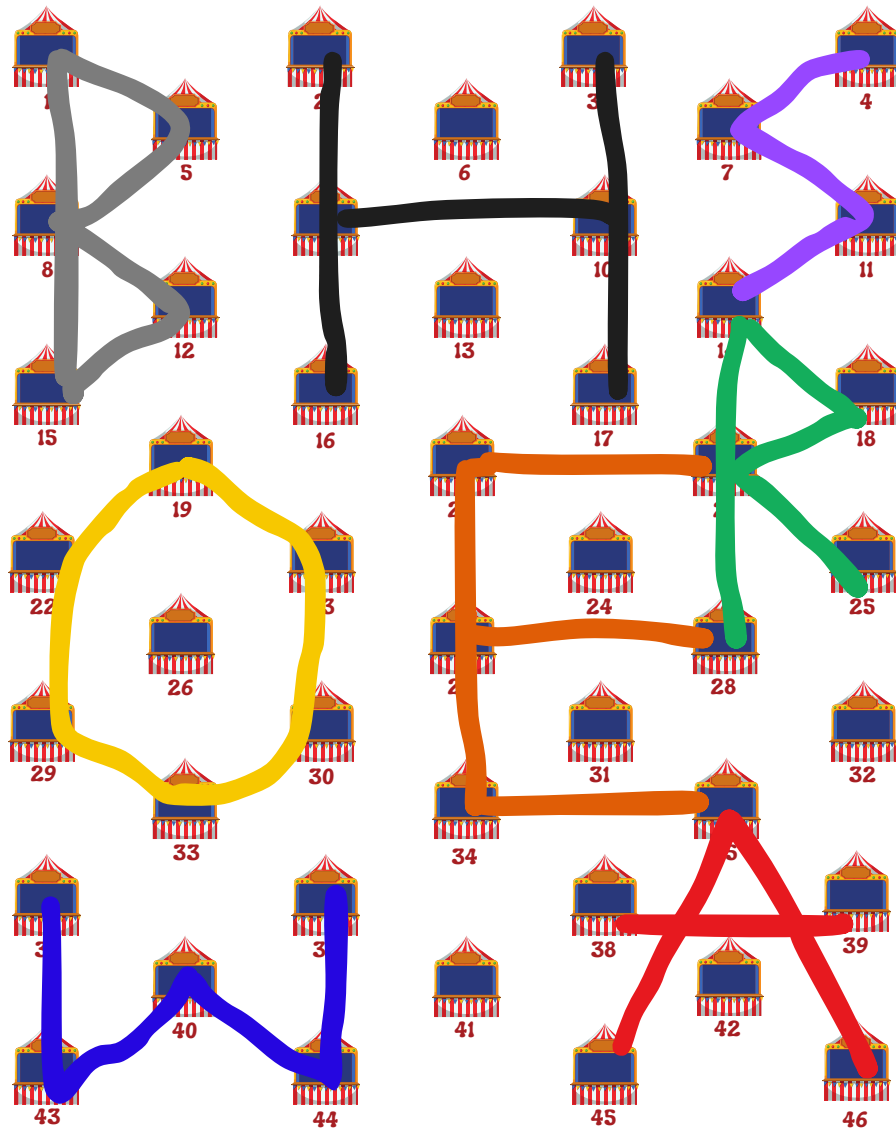
Case 3: Poodlenapped

10. 1st Clue - Witness (page 19)
11. 2nd Clue - Kennel (page 20)
12. 3rd Clue - Tents (page 21-22)
13. What happened to Princess? (page 23)

Case 4: A Trapeze Trap

14. 1st Clue - Crime Scene (page 27)
 15. 2nd Clue - Strange Note (page 27)
 16. 3rd Clue - Witness (page 28)
 17. What happened to the attacker? (page 29)
- 

1ST CLUE - CRIME SCENE (PAGES 5-6)



When you put the letters in the correct order using the painted numbers in Photo A you get this message: "Bobo was here."

This eliminates Bobo as a suspect since he was painting letters and numbers in the midway when the hat was stolen.

2ND CLUE - THE JUGGLER'S ROOM (PAGE 7)

If you mentally rearrange the rows of marks you will get this message:

IN A MIRROR

This is the answer to the question, "Do you want to know where you can find the funniest joke?" In a mirror.

This implies the funniest joke is your face since that is what you see in a mirror. This directly ties to Carl's favorite joke. Which means Carl was the one pranking Mike the Juggler's room. So Carl didn't steal the hat.

3RD CLUE - WITNESS (PAGE 8)

	Juggling	Magic Tricks	Balloon Animals	Back Flips	Trombone	Violin	Tuba	Maracas
Bobo	X	✓	X	X	✓	X	X	X
Carl	X	X	✓	X	X	X	X	✓
Charlie	X	X	X	✓	X	✓	X	X
Toby	✓	X	X	X	X	X	✓	X
Trombone	X	✓	X	X				
Violin	X	X	X	✓				
Tuba	✓	X	X	X				
Maracas	X	X	✓	X				

This eliminates Toby as a suspect since he plays the tuba, and the clown who plays the tuba was seen pranking customers during the time the hat was stolen.

WHERE IS THE HAT? (PAGE 9)

Guilty Suspect: Charlie

What the wheel should look like after you turn it.



Decoded Message:

"Good job. The Hat was under Charlies bed."

1ST CLUE CRIME SCENE (PAGE 13)

The ticket found at the crime scene belonged to the poisoner. This fact means Riley is NOT the poisoner. Since she is not supposed to be at the circus and she snuck in, she would not have a ticket.

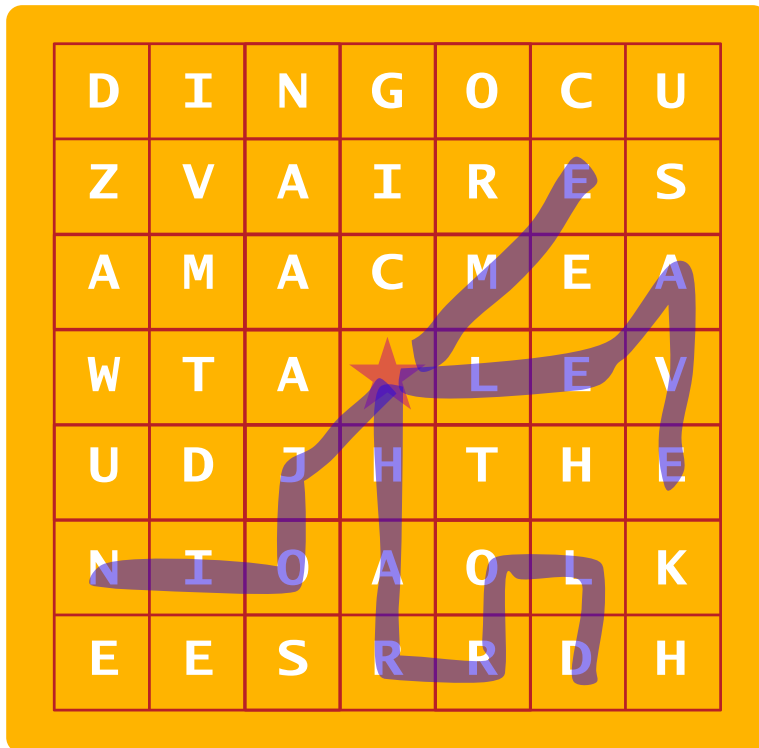
2ND CLUE - STRANGE NOTE (PAGE 13)

Decoded message:

“I am glad I have never had to work with you”

(Since this message was written by the poisoner and since this message is something Fred wouldn't write, you can conclude that Fred is not the poisoner)

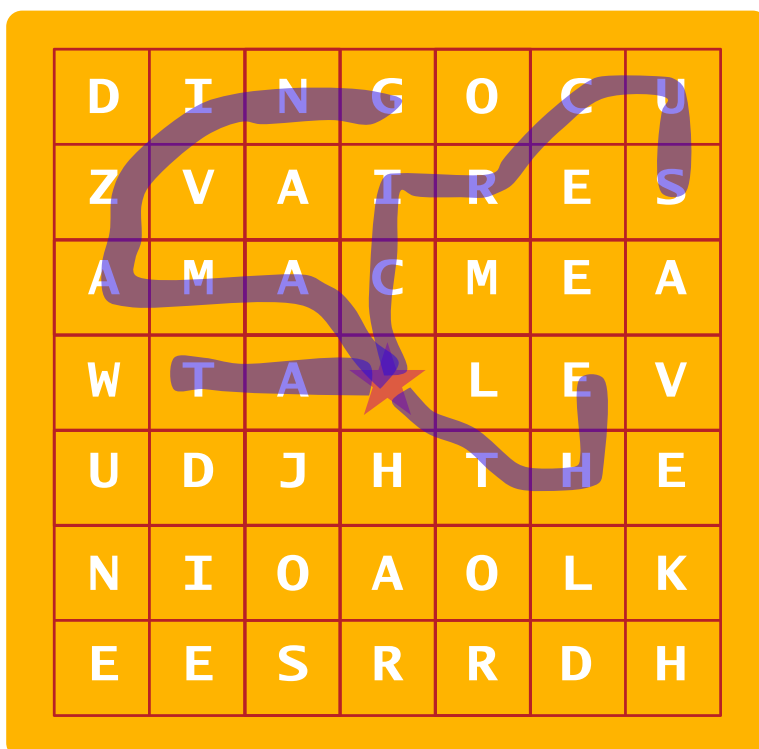
3RD CLUE - WITNESS (PAGE 14)



Message:

Leave Harrold, join me at
the amazing circus.

(This eliminates Ralph, since he was
trying to recruit performers to join his
circus during the time when the
clowns' face paint was poisoned.).



WHAT WAS MIXED INTO THE FACE PAINT? (PAGE 15)

Guilty Suspect: Faye

What the wheel should look like after you turn it.



Decoded Message:

“Faye mixed itching powder into the face paint.”

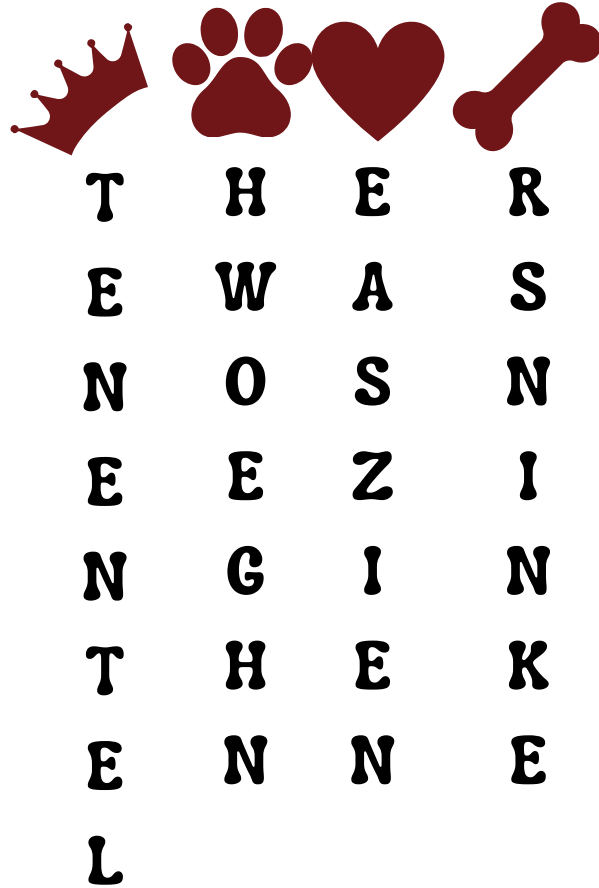
1ST CLUE - WITNESS (PAGE 19)

Decoded message:

“There was a man with a net chasing a cat before the show”

(THIS ELIMINATES HUW)

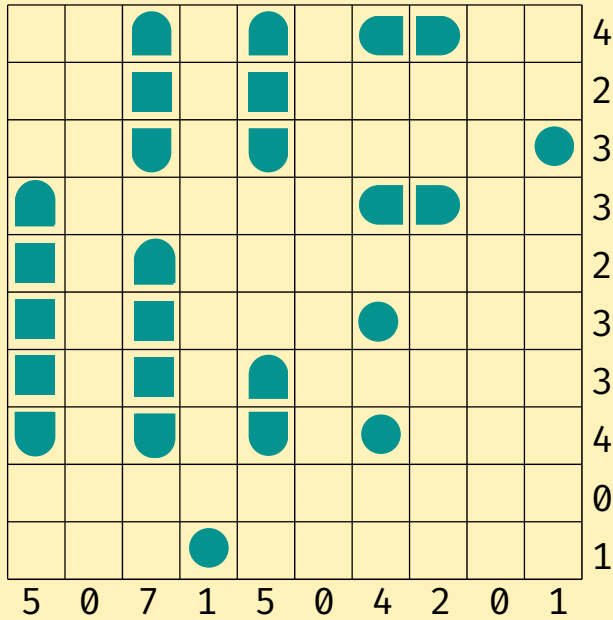
2ND CLUE - KENNEL (PAGE 20)



THERE WAS NO SNEEZING IN THE KENNEL

(THIS ELIMINATES ASHTON)

3RD CLUE - TENTS (PAGE 21-22)



R	G	Y	O	O	S	U	N	R	E
O	L	E	H	E	G	H	P	R	E
Y	H	D	F	S	G	H	P	W	T
R	E	L	F	A	I	E	N	S	H
G	E	T	H	A	I	W	I	Z	A
H	A	T	U	G	T	O	O	X	V
C	S	U	T	T	R	W	Y	W	E
A	V	L	D	O	E	C	T	H	I
H	H	M	W	B	E	A	T	O	M
I	Q	P	K	Z	A	A	R	S	A

You need strength to
cut a lock.

(This eliminates Liyana,
since she is a small child).

WHAT HAPPENED TO PRINCESS? (PAGE 23)

Guilty Suspect: Lisa

What the wheel should look like after you turn it.



Decoded Message:

“Lisa used her assistant to help sneak the dog out.”

1ST CLUE - CRIME SCENE (PAGE 27)

The photo of dirt shows that the stool was used. Notice the three circular indents in the dirt. These could only be caused by the legs of the stool. The stool is 4 ft in height, so add 4 ft to everyone's height. This will put Ben at 10 ft 10 in. So since he would be more than a foot above the 9 ft high cut, you can eliminate Ben as a suspect.

2ND CLUE - STRANGE NOTE (PAGE 27)

Decoded message:

I love you Lillian
I am happy you feel the same
I promise this wont affect our routines
Love Sal

(this eliminates Sal as a suspect)

3RD CLUE - WITNESS (PAGE 28)

After reading the clues and places the trapeze artists in the order they hint at you will end up with this:

Routine Order

Sal Young

Lillian Sky

Ben Smith

Sue Drown

Kim Jones

(this eliminates Sue as a suspect)

WHAT HAPPENED TO THE ATTACKER? (PAGE 29)

Guilty Suspect: Kim

What the wheel should look like after you turn it.



Decoded Message:

“Kim will be spending a few years in prison.”